



1

**Before Starting Assembly, please check contents are as follows:**

- 1 Unit/filter
- 1 Diffuser
- 1 Outlet Pipe
- 1 White sealing ring
- 1 Test kit/bottle
- 1 Grab Tap

**Service interval kit comprising:**

- moulded plastic mount + screw
- printed card
- self-adhesive Timestrip.

See below left for instructions.

## Service Indicator - assembly and attachment



- i Insert the boss on the reverse of the mount (c) into the pre-drilled hole in the separator lid.
- ii Peel backing from timestrip (a) and attach to the plastic card (b) within the dotted lines.
- iii Flex the card, passing the ends through the slots on the top surface of the mount.

**To activate**, press firmly on the timestrip label at the point indicated.

After a few minutes a red line will appear, to indicate 'time in service' up to 12 months

A replacement card and timestrip will be supplied with each service kit.

## General Installation notes

- Please ensure a steady fall in the pipe run from the outlet point to the foul drain.
- Never discharge condensate to a storm drain or to surface water; always connect to a foul drain or sewer.
- Remember that it's the user's responsibility to check with the local authority as to the permissible discharges in their area.

### Testing Quality

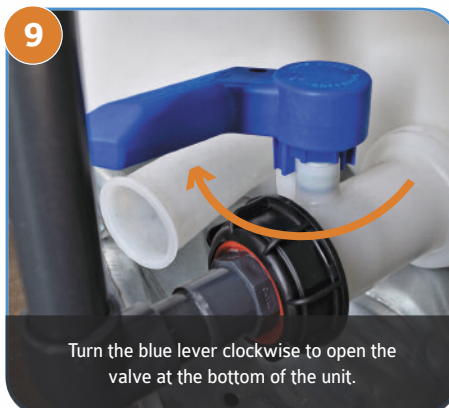
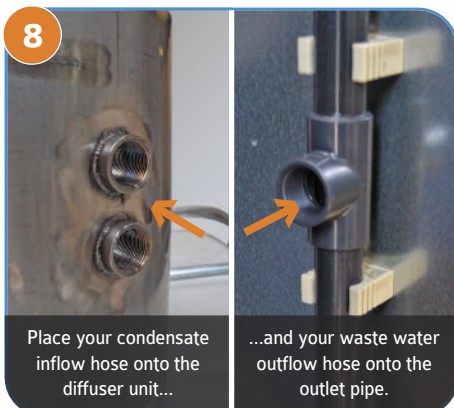
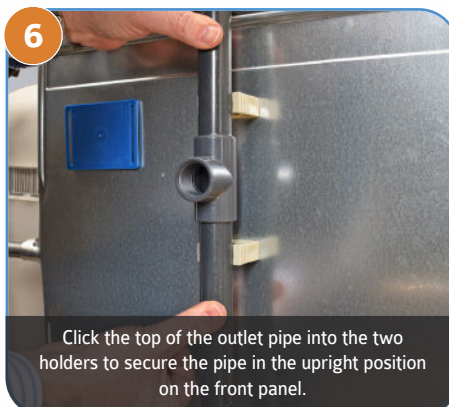
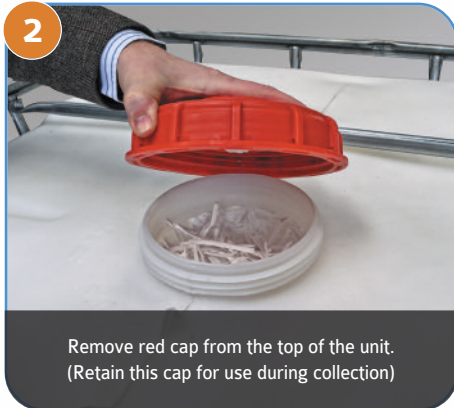
Replace filters before outlet cloudiness exceeds the ppm limit for your region.

Test outlet quality weekly using kit provided.



Further information is available on our website below.





## Completed SEP 7000/3500 units

