



1

**Before Starting Assembly, please check contents are as follows:**

- 2 White Felt Filter with black tube
- 4 Silexa Filters
- 1 Connecting Yoke (Large blue figure 8)
- 1 Test Bottle
- 4 Metal Retaining Springs (460mm)
- 2 1250 ST Towers
- 2 Lids (only one drilled)

**Service interval kit comprising:**

- moulded plastic mount + screw
- printed card
- self-adhesive Timestrip.

**Fitting kit containing:**

- 2 Straight adaptor 15mm x 1/2" BSP
- 2 Blanking Plugs - large
- 4 Elbow 15mm
- 1 Assembled Porting Block
- 6 Porting Block Small Blanking Plugs
- 4 All-Thread Screws (M5 x 102mm)
- 8 Sleeve Nut Ends (M5 x 9 x 20mm)
- 3 Stem Adaptors
- 2 Reducing Bush
- 1 T-Piece
- 2 Grab Taps
- 2 Black Tube 200mm x 15mm Dia.
- 2 Blue Tube 265mm x 15mm Dia.

## Service Indicator - assembly and attachment



**i** Insert the boss on the reverse of the mount (c) into the pre-drilled hole in the separator lid.

**ii** Peel backing from timestrip (a) and attach to the plastic card (b) within the dotted lines.

**iii** Flex the card, passing the ends through the slots on the top surface of the mount.

**To activate**, press firmly on the timestrip label at the point indicated.

After a few minutes a red line will appear, to indicate 'time in service' up to 12 months

A replacement card and timestrip will be supplied with each service kit.

## General Installation notes

- Please ensure a steady fall in the pipe run from the outlet point to the foul drain.
- Never discharge condensate to a storm drain or to surface water; always connect to a foul drain or sewer.
- Remember that it's the user's responsibility to check with the local authority as to the permissible discharges in their area.

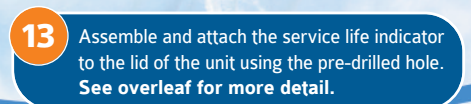
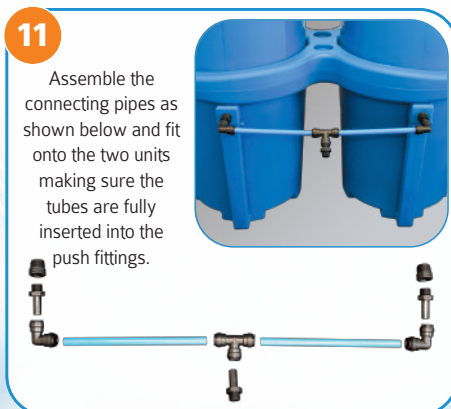
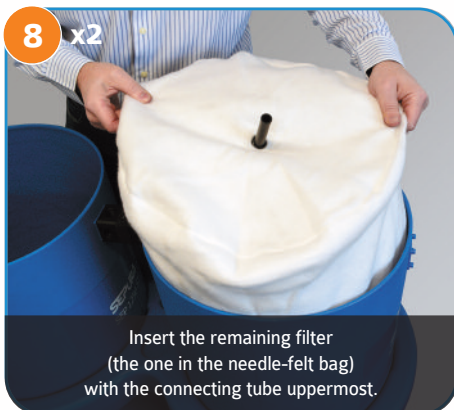
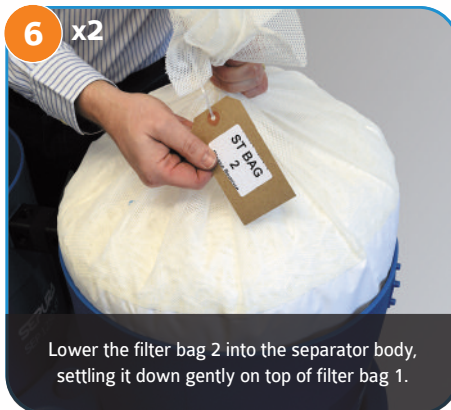
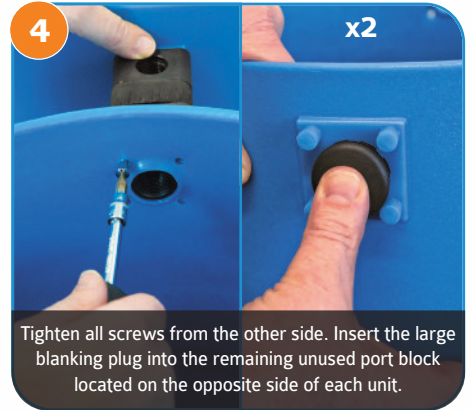
### Testing Quality

Replace filters before outlet cloudiness exceeds the ppm limit for your region.

Test outlet quality weekly using kit provided.



Further information is available on our website below.



## Completed SEP 2500 unit

