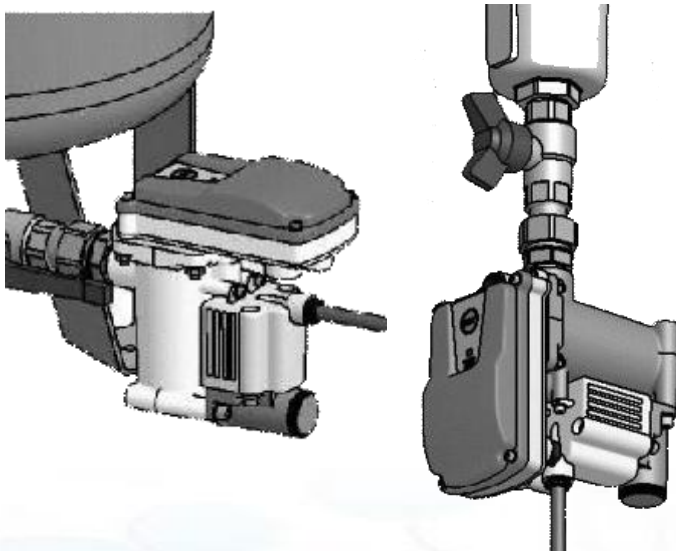


EMD12 & EMD12A

Zero-loss, electronic, modular condensate drain

- High reliability
- Ultra quick service
- Accessible integral strainer
- Low maintenance
- Self cleaning direct acting valve
- Remote alarm (version 'A')
- LED function indicator
- Test button
- For lubricated or oil-free systems
- Flexible installation arrangement



“EMD12 Flexible installation options make life easier. Installation is quicker, less expensive and less prone to error”



Description

EMD12 series has been designed to offer fully automatic discharging of condensate from compressed air systems. It can be installed on piston or screw type air compressors, after coolers, cyclone separators, air receivers, air dryers or in-line filters.

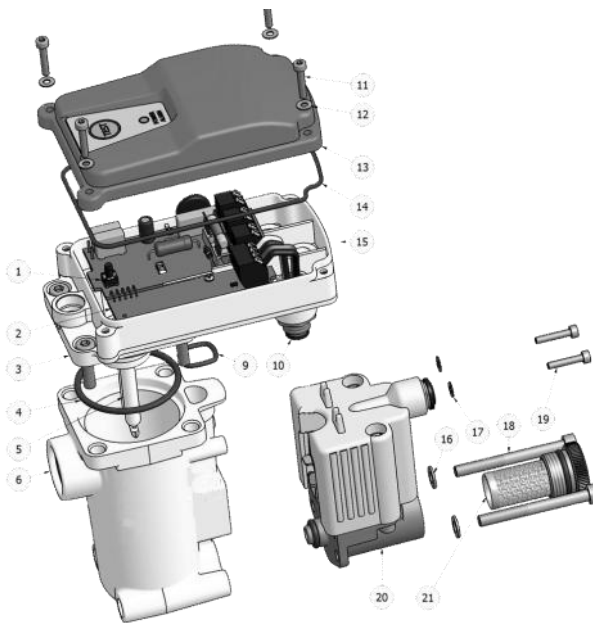
The accumulating condensate is monitored by a precision capacitive sensor which operates the self cleaning direct acting solenoid valve when required to discharge condensate and retain valuable compressed air.

EMD12 has an integral strainer which protects the valve but does not cause any of the air-locking problems associated with external strainers.

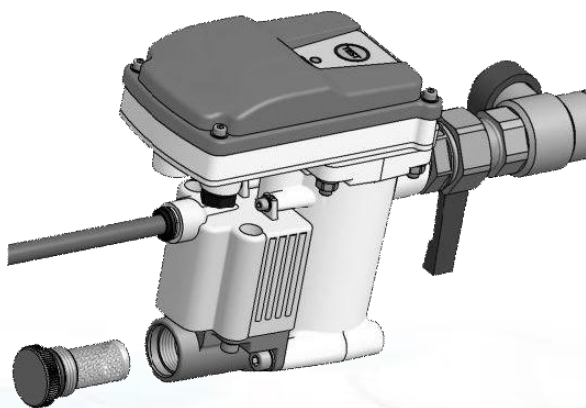
Maintenance consists of an annual visual check, with interim cleaning of the strainer depending upon the contamination level of the air system.

EMD12 and EMD12A 230vac operating specifications

MODEL	Compressor capacity	Dryer capacity	Filter capacity	Pressure range	Temp range	Inlet connection	Outlet connection	Remote alarm
	cfm - m ³ /m			psi/bar	°C			
EMD12	300 / 8.7	600 / 18.5	3000 / 90	0-232 psi	1.5 to 65	G1/2" parallel	8mm push fitting	NO
EMD12A				0-16 bar				YES



"EMD12 service module is easy to remove, as the main body of the drain remains connected to the compressed air system"



General information

Housing material	PA 6
Valve/strainer	Stainless 1.4057
Strainer plug	Brass
Level sensor	Polypropylene
Seals	NBR
Height	147mm
Length	133mm
Width	76mm
Floor to outlet c/line	82mm