



1

Before Starting Assembly, please check contents are as follows:

- 2 White Felt Filter with black tube
- 4 Silexa Filters
- 1 Connecting Yoke (Large blue figure 8)
- 1 Test Bottle
- 4 Metal Retaining Springs (460mm)
- 2 1250 ST Towers
- 2 Lids (only one drilled)

Service interval kit comprising:

- moulded plastic mount + screw
- printed card
- self-adhesive Timestrip.

Fitting kit containing:

- 2 Straight adaptor 15mm x 1/2" BSP
- 2 Blanking Plugs - large
- 4 Elbow 15mm
- 1 Assembled Porting Block
- 6 Porting Block Small Blanking Plugs
- 4 All-Thread Screws (M5 x 102mm)
- 8 Sleeve Nut Ends (M5 x 9 x 20mm)
- 3 Stem Adaptors
- 2 Reducing Bush
- 1 T-Piece
- 2 Grab Taps
- 2 Black Tube 200mm x 15mm Dia.
- 2 Blue Tube 265mm x 15mm Dia.

Service Indicator - assembly and attachment



i Insert the boss on the reverse of the mount (c) into the pre-drilled hole in the separator lid.

ii Peel backing from timestrip (a) and attach to the plastic card (b) within the dotted lines.

iii Flex the card, passing the ends through the slots on the top surface of the mount.

To activate, press firmly on the timestrip label at the point indicated.

After a few minutes a red line will appear, to indicate 'time in service' up to 12 months

A replacement card and timestrip will be supplied with each service kit.

General Installation notes

- Please ensure a steady fall in the pipe run from the outlet point to the foul drain.
- Never discharge condensate to a storm drain or to surface water; always connect to a foul drain or sewer.
- Remember that it's the user's responsibility to check with the local authority as to the permissible discharges in their area.

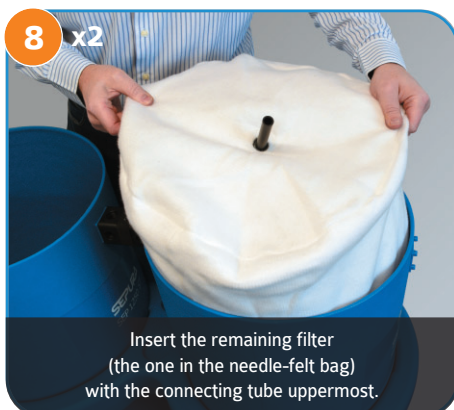
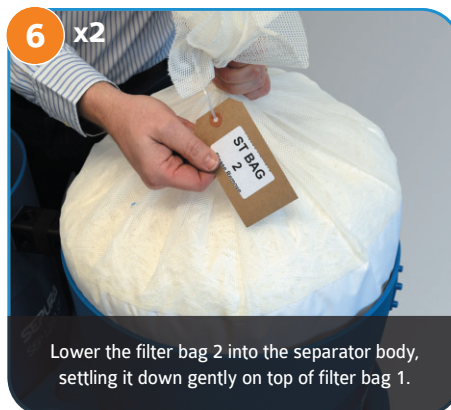
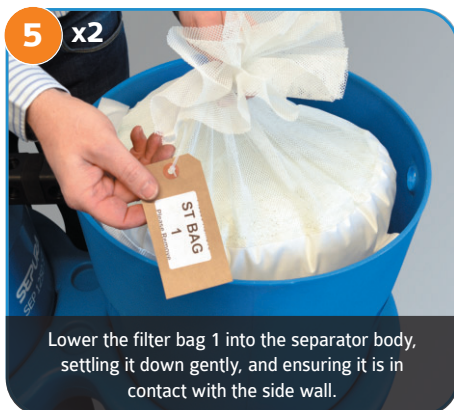
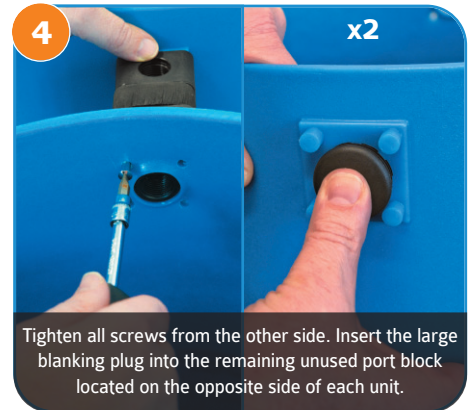
Testing Quality

Replace filters before outlet cloudiness exceeds the ppm limit for your region.

Test outlet quality weekly using kit provided.



Further information is available on our website below.



Completed SEP 2500 unit

