

Useful Wall Mounting Brackets that allow smaller units to be raised off the floor for convenience.

Benefits of wall mounted units:

- Free up valuable floor space
- Less chance of damage from machinery
- Easier height to take test samples from
- Tidier workspace

The SEPURA™ WMB comes in two sizes to fit our SEP 120 and SEP 360 units. It can be ordered in Powder Coated blue finish to match the unit or Stainless Steel.

360WMB

120WMB

Easy install



SEPURA™ WMB

Wall Mounting Bracket for SEP 120 & 360 Units

See over for fitting guidelines

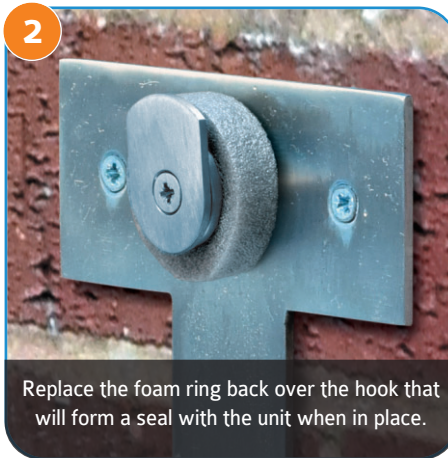
Before installing the WMB (Wall Mounting Bracket), please read the following guidelines.

- Find the optimum location for the installation. It is important the chosen anchor point can safely support 7kg WMB120 and/or 17kg WMB360.
- Ensure that the chosen position will allow safe maintenance, servicing & weekly water testing access.
- Safely fix the WMB, plumb, level, square & true to the anchor point using the correct fittings in all 4 fixing holes provided specific to the installations requirements.
- All WMB installations must comply to Health & Safety Legislation and/or Regulations.

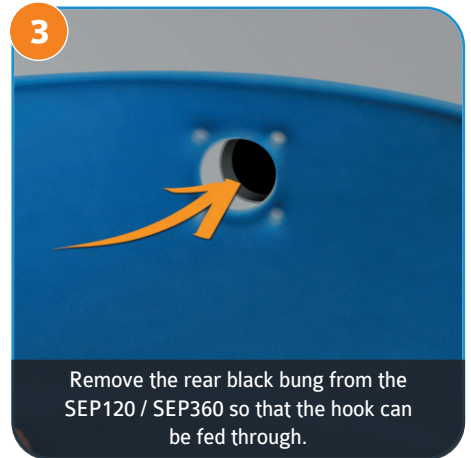
NOTE: SEPURA™ do not supply fixings for the WMB with each kit. It is your responsibility to use appropriate fixings for the surface that you wish to attach it to. SEPURA™ will not be responsible for any accidental or performance issues arising from fixing of the WMB unit.



Secure the WMB to the wall / flat surface using suitable fixings (see NOTE above).



Replace the foam ring back over the hook that will form a seal with the unit when in place.



Remove the rear black bung from the SEP120 / SEP360 so that the hook can be fed through.

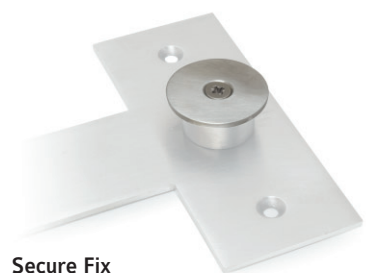


Feed the wall hook through the hole in the rear of the unit and gently lower down onto the support feet.

Optional fixings supplied:



Easy Hook
Allows the unit to be lifted on and off quickly



Secure Fix
Prevents tampering or quick removal.

For information on the correct positioning and installation of your SEPURA™ Separator Unit please see the accompanying leaflet.

Wall Mounting Bracket for use with SEP 120 & 360

