



1

Before Starting Assembly, please check contents are as follows:

- 1 Unit/filter
- 1 Diffuser
- 1 Outlet Pipe
- 1 White sealing ring
- 1 Test kit/bottle
- 2 Grab Taps

Service interval kit comprising:

- moulded plastic mount + screw
- 2 x printed card
- 2 x self-adhesive Timestrip.

See below left for instructions.

Service Indicator - assembly and attachment



i Insert the boss on the reverse of the mount **(c)** into the pre-drilled hole in the separator lid.

ii Peel backing from timestrip **(a)** and attach to the plastic card **(b)** within the dotted lines.

iii Flex the card, passing the ends through the slots on the top surface of the mount.

To activate, press firmly on the timestrip label at the point indicated.

After a few minutes a red line will appear, to indicate 'time in service' up to 12 months

A replacement card and timestrip will be supplied with each service kit.

General Installation notes

- Please ensure a steady fall in the pipe run from the outlet point to the foul drain.
- Never discharge condensate to a storm drain or to surface water; always connect to a foul drain or sewer.
- Remember that it's the user's responsibility to check with the local authority as to the permissible discharges in their area.

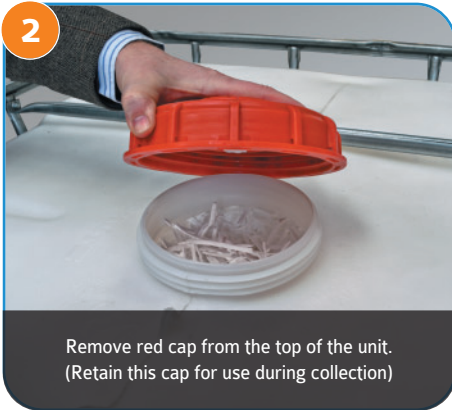
Testing Quality

Replace filters before outlet cloudiness exceeds the ppm limit for your region.

Test outlet quality weekly using kit provided.



Further information is available on our website below.



Remove red cap from the top of the unit.
(Retain this cap for use during collection)



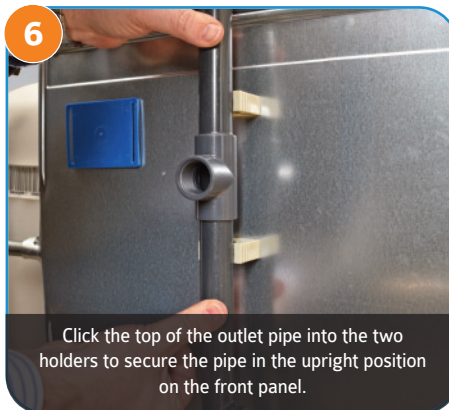
Place the diffuser into the hole,
foam pointing upwards as shown



Remove outlet pipe transit cap.



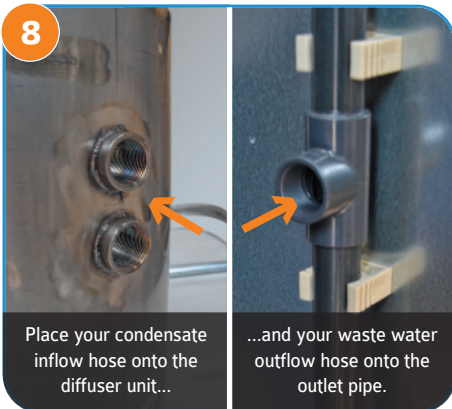
Attach the long outlet pipe to the outlet of the unit by
screwing the black ring onto the thread.
Ensure that the pipe is fitted with a white sealing ring.



Click the top of the outlet pipe into the two
holders to secure the pipe in the upright position
on the front panel.

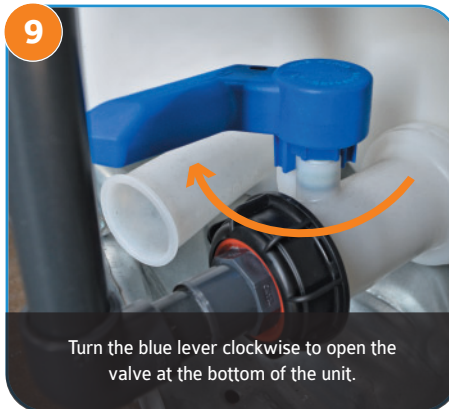


Unlock the valve lever by loosening the screw
below the blue lever arm.



Place your condensate
inflow hose onto the
diffuser unit...

...and your waste water
outflow hose onto the
outlet pipe.



Turn the blue lever clockwise to open the
valve at the bottom of the unit.



Fit Grab Tap to test outlet on main pipe.
Take a sample of condensate once a week and test.
(see over for details)

Completed SEP 7000/3500 units



Assemble and attach the service life indicator.
See overleaf

